

PARTNERS

Italy

Lead Partner: Intermunicipal Consortium "Tindari-Nebrodi", Tindari (ME)
ANCI Sicilia, Palermo

Greece

Archanon- Asterousion Municipality, Crete
CRES - Centre for Renewable Energy Sources and Saving, Pikermi (Attiki)

Malta

Pembroke Local Council, Pembroke

Spain

Province of Teruel, Teruel
Foundation for the Social Development, Zaragoza

ASSOCIATED PARTNERS

Tourism Department of the Regional Government of Sicily, Palermo (Italy)
Territorial Policies Department of the Province of Messina, Messina (Italy)
Local Council Association of Malta, Balzan (Malta)
Environment Department of the Regional Government of Aragón, Zaragoza (Spain)
Region of Crete, Heraklion (Greece)



MED Operational Programme – Cohesion Policy 2007-2013
Europe in the Mediterranean
This project is part-financed by the European Union
European Regional Development Fund (ERDF)
Co-financing rate: 85% EU Funds; 15% National Funds

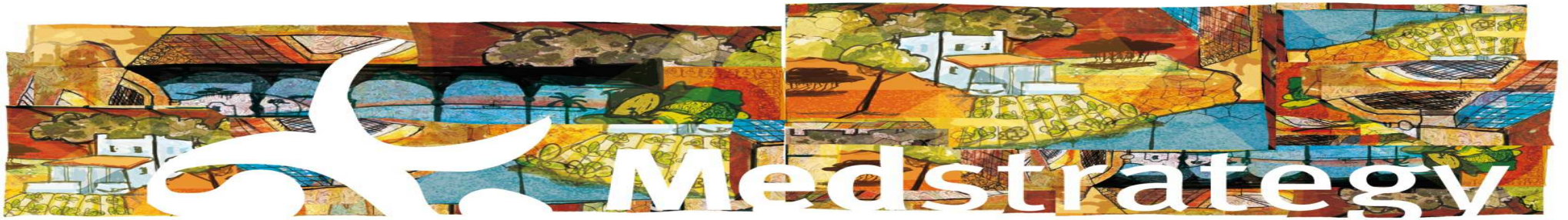


Investing in your future

www.medstrategyproject.eu



Integrated Strategy for Sustainable Development of Mediterranean Rural Areas



English version

Activities

Diagnosis of the involved territories: assessment of the 3 dimensions of sustainability (economic-social-environmental) through appropriate indicators and using GIS applications, for identifying trends and conditions, root causes of problems.

Diagnosis of the institutional framework: audit of local authorities governance systems for identifying weaknesses and strengths of the present institutional system; review of success governance modes and tools.

Establishment of communities participation process through the setting up of local forums that involve key actors and local stakeholders (citizens, local administrators and decision makers, opinion leaders, business sector operators, tourism providers, professional associations, environmental associations, civil society groups etc.) in order to elaborate and produce a common vision of future and shared "green economy" strategies.

Drawing up of 4 Local Pilot Operative Plans for the integrated development oriented to sustainability of rural areas: Local Pilot Operative Plans will be scheduled following strategic axes and objectives. For each strategic axis innovative and integrated actions will be pointed out. The technical and administrative tools, the financial sources/tools and the key actors requested for the implementation of each action will be defined as well as actions' time schedule.

Definition of the Transnational Local Development Methodology for sustainable development in Mediterranean rural areas".

Drawing up of 4 key interventions aimed at the social and economic development of the involved rural areas.

Regions involved

The project involves rural territories of the Mediterranean area, in Italy, Spain, Greece, and Malta. The involved areas are: the territory of Tindari-Nebrodi including 16 Municipalities in the Province of Messina (Sicily); the territory of

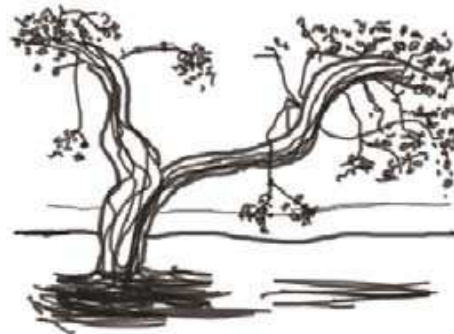
Archanon- Asterousion Municipality including 59 communities in the Prefecture of Heraklion (Crete); the territory of Teruel including 10 Municipalities within the Teruel Province (Aragon); the territory around Pembroke which will be "project leader" for the Majjstral Local Council including 13 Municipalities in the District of Northern Harbour (Malta Majjstral).

The MedStrategy project

MedStrategy project is a project financed through the EU MED Programme. It aims at improving and address territorial governance of Med rural areas towards sustainability through an innovative integrated Planning Model (PM). The process will focus on 3 themes:

- The integration of economic, social, environmental dimensions of sustainability in planning;
- The development of integrated & shared strategies and actions through the cooperation of local authorities and the engagement of local communities (key actors, stakeholders) for the innovation of territorial governance;
- The setting up of common objectives & activities (preservation of cultural and natural heritage, competitiveness of territorial system, social & gender equality, etc) for local and transnational synergies of rural areas.

The project started in June 2010 and it will end in May 2012.



Maltese version

Attivitajiet:

Dijanjozi tat-territorji involuti: valutazzjoni tat-tlett dimensjonijiet tas-sostenibbiltà (ekonomika-soċjali-ambjentali) permezz ta' indikaturi xierqa u l-użu ta' l-applikazzjonijiet GIS, identifikazzjoni ta' xejriet u kundizzjonijiet, u kawżi ikkaġunati minn problemi.

Dijanjozi tal-qafas istituzzjonali: Awditjar tas-sistemi ta' l-awtoritajiet governattivi lokali sabiex nidentifikaw id-għajfijiet u s-saħħa fis-sistema istituzzjonali attwali, u revizzjoni tal-modi t'għodda għall-governanza ta' suċċess.

Stabiliment ta' proċess għall-partecipazzjoni ta' komunitajiet permezz tat-twaqqif ta' fora lokali li tinvolvi atturi ewlenin u partijiet interessati lokali (ċittadini, amministraturi lokali u dawk li jfasslu d-deċizzjonijiet, l-opinjoni, operatori tas-settur tan-negozju, fornituri tat-turiżmu, assoċjazzjonijiet professjonali, assoċjazzjonijiet ambjentali, gruppi tas-soċjetà ċivili eċċ) sabiex telabora u jipproduċu viżjoni komuni għall-futur u strategija ta' "ekonomija ħadra".

It-fassil ta' 4 Pjanijiet Pilota fuq bażi Lokali għall-iżvilupp operattiv integrat u orjentati lejn is-sostenibbiltà taż-żoni rurali: Pjanijiet Pilota Lokali operattivi li se jiġu skedati wara l-assi strateġiċi u l-oġettivi. Kull ass strateġiku, azzjonijiet innovattivi u integrati, ser jiġu enfasszjata. L-għodda tekniki u amministrattivi, is-sorsi / għodda finanzjarji u l-atturi ewlenin ser jiġu kkonsultata għall-implimentazzjoni ta' kull azzjoni ser tiġi definita, kif ukoll ser tiffassal skeda ta' żmien t'azzjoni.

Definizzjoni tal-Metodologija għall-iżvilupp Transnazzjonali Lokali għall-iżvilupp sostenibbli fiż-żoni rurali tal-Mediterran. It-fassil ta' 4 interventi ewlenin maħsuba għall-iżvilupp soċjali u ekonomiku taż-żoni rurali involuti.

Reġjuni involuti

Il-proġett jinvolvi territorji rurali taż-żona tal-Mediterran - L-Italja, Spanja, il-Greċja u Malta. L-oqsma involuti huma: it-territorju ta' Tindari-Nebrodi inklużi s-16-il municiplitalitajiet fil-

provinċja ta' Messina (Sqallija); It-territorju ta' Archanon-Asterousion Muniċipalitá nkluzi il-59 Komunitá fil-Prefettura ta' Heraklion (Kreta); It-territorju ta' Teruel inklużi l-10 Muniċipalitajiet fil-Provinċja Teruel (Aragon); It-territorju ta' madwar Pembroke li se jkun "proġett mexxej" għall-Kunsilli Lokali Majjstral inklużi it-13-il municiplitalitajiet fil-Distrett tal-Port tat-Tramuntana (Malta Majjstral).

Il-proġett tal-MedStrategy

Il-proġett tal-MedStrategy ser ikun proġett iffinanzjat permezz tal-Programm MED UE. Huwa mmirat li jtejjeb u jindirizza l-governanza territorjali taż-żoni rurali Med lejn is-sostenibbiltà permezz ta' Mudell t'Ipplanar Innovattiv u Integrat (PM). Il-proċess ser jiffoka fuq 3 temi:

- L-integrazzjoni ta' l-ekonomija, soċjali u d-dimensjonijiet ambjentali tas-sostenibbiltà fl-ippjanar;
 - L-iżvilupp ta' strateġiji integrati u kondiviżi u l-azzjonijiet permezz tal-kooperazzjoni tal-awtoritajiet lokali u l-involvement tal-komunitajiet lokali (l-atturi ewlenin, partijiet interessati) għall-innovazzjoni ta' governanza territorjali;
 - It-twaqqif ta' għanijiet komuni u attivitajiet (preservazzjoni tal-wirt kulturali u naturali, l-kompetittività tas-sistema territorjali, l-ugwaljanza soċjali u tas-sessi, eċċ) għal sinerġiji lokali u transnazzjonali ta' żoni rurali
- Il-proġett beda f'Ġunju 2010 u set jintemm f' Mejju 2012.

